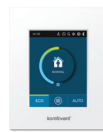
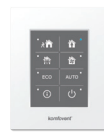


# Domekt R 450 V

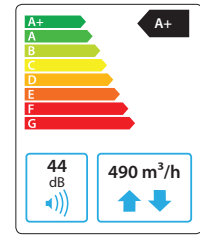
Maximal air flow, m <sup>3</sup> /h	490
Maximal air flow, l/s	136,11
Unit weight, kg	60
Supply voltage, V	1~230
Maximal operating current, A	HE6,5
Thermal efficiency of heat recovery, %	86
Reference flow rate, m <sup>3</sup> /s	0,095
Reference pressure difference, Pa	50
SPI, W/(m <sup>3</sup> /h)	0,27
Filters dimensions B×H×L, mm	517×278×46
Electric power input of the fan drive at reference flow rate, W	47
Electric power input of the fan drive at maximum flow rate, W	128
Electric air heater capacity, kW / Δt, °C	1 / 8,6
Maintenance space, mm	700



C6.1



C6.2



## Acoustic data

A-weighted sound power level  $L_{WA}$ , dB(A) at reference flow rate

Supply inlet	59
Supply outlet	73
Exhaust inlet	59
Exhaust outlet	73
Casing	44

A-weighted sound pressure level  $L_{pA}$ , dB(A)

10 m<sup>2</sup> normally isolated room, distance from casing – 3 m.

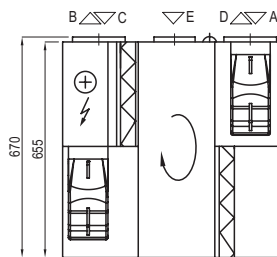
Surroundings	33
--------------	----

## Temperature efficiency

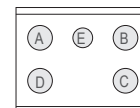
Outside temperature, °C	Winter					Summer		
	-23	-15	-10	-5	0	25	30	35
After heat exchanger, °C	15,7	16,8	17,5	18,2	18,9	22,4	23,1	23,8

indoor +22°C, 20 % RH

### Shown as left (L1)



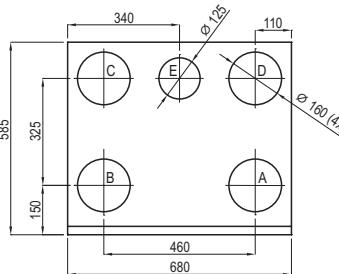
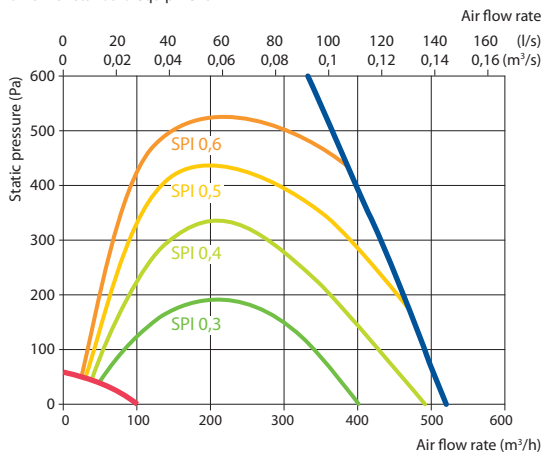
### Shown as right (R1)



- A outdoor intake
- B supply air
- C extract indoor
- D exhaust air
- E additional extraction connection (by-pass – extraction without heat recovery)

## Performance

Unit with standard equipment



## Accessories (p. 123)

Closing damper	AGUJ-M-160+LF230/LM230
	A/D AGS-160-50-600-M
Silencer	B/C AGS-160-50-900-M
Water heater	DH-160
PPU	PPU-HW-3R-15-0,4-W1

2-way valve (water heater)	VVP47.10-0,4
Water cooler	DCW-0,5-3 / DHCW-160
2-way valve (water cooler)	VVP47.10-1,6
DX cooler	DCF-0,5-3
Cooling unit	MOU-12HFN8+KA8243