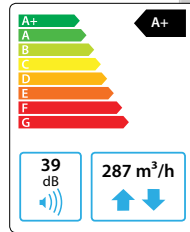


Domekt R 400 V

Maximal air flow, m ³ /h	287
Panel thickness, mm	25
Unit weight, kg	50
Supply voltage, V	1~230
Maximal operating current, A	HE5,5
Thermal efficiency of heat recovery, %	86
Reference flow rate, m ³ /s	0,056
Reference pressure difference, Pa	50
SPI, W/(m ³ /h)	0,24
Filters dimensions B×H×L, mm	450×210×46
Electric power input of the fan drive at reference flow rate, W	23
Electric power input of the fan drive at maximum flow rate, W	71
Electric air heater capacity, kW / Δt, °C	1 / 13,8
Control panel	C6.1 / C6.2
Maintenance space, mm	450



The photo is intended for informational purposes only. exact details may vary.



Acoustic data

A-weighted sound power level L_{WA} , dB(A)
at reference flow rate

Supply inlet	52
Supply outlet	65
Exhaust inlet	52
Exhaust outlet	65
Casing	39

A-weighted sound pressure level L_{pA} , dB(A)

10 m² normally isolated room, distance from casing – 3 m.

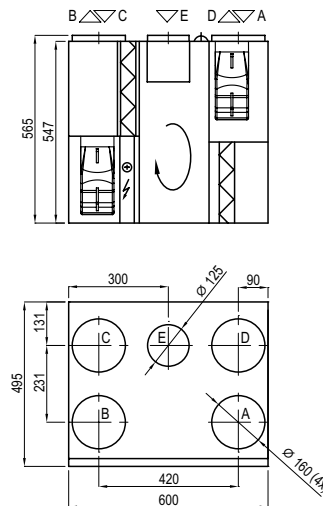
Surroundings	29
--------------	----

Temperature efficiency

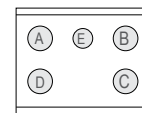
Outside temperature, °C	Winter					Summer		
	-23	-15	-10	-5	0	25	30	35
After heat exchanger, °C	14,8	16,1	16,9	17,7	18,5	22,5	23,3	24,1

indoor +22°C, 20 % RH

Shown as left (L1)



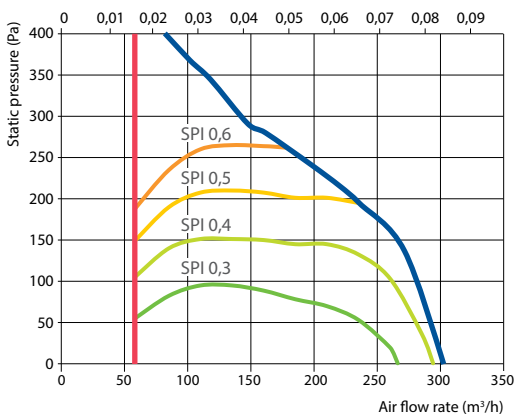
Shown as right (R1)



- A outdoor intake
- B supply air
- C extract indoor
- D exhaust air
- E additional extraction connection (by-pass – extraction without heat recovery)

Performance

Unit with standard equipment



Accessories (p. 120)

Closing damper	AGUJ-M-160+LF230/LM230	2-way valve (water heater)	VVP47.10-0,4
Silencer	A/D AGS-160-50-600-M	Water cooler	DCW-0,4-3 / DHCW-160
	B/C AGS-160-50-900-M	2-way valve (water cooler)	VVP47.10-1,6
Water heater	DH-160	DX cooler	DCF-0,4-3
PPU	PPU-HW-3R-15-0,4-W1		